

Discover the beauty of Rishikesh...

# DEECON Valley



## Contact Details

Phone : +91 98101 24721  
+91 99100 01911

Web : [info@deecon.co.in](mailto:info@deecon.co.in)  
[www.deecon.co.in](http://www.deecon.co.in)



## Corporate Office

Deecon House 360, Block-B,  
Sector 19, Dwarka,  
New Delhi-110075





# DISCOVER RISHIKESH



## Gateway to the Garhwal Himalayas

Rishikesh - World Capital of Yoga Rishikesh is the only destination in the world which is equally popular for pilgrimage, Yoga and Adventure Sports.

It is approximately 25 km north of the city Haridwar and 43 km southeast of the state capital Dehradun.

Rishikesh has been a part of the legendary 'Kedarkhand'. Legends state that Lord Rama did penance here for killing Ravana, the asura king of Lanka; and Lakshmana, his younger brother, crossed the river Ganges, at a point, where the present 'Lakshman Jhula' bridge stands today, using a jute rope bridge.

"Rishikesh" the word is combination of two words Hrishik and esh. Hrishik means senses and esh means god or master. It means god of senses.





# LIFE AT RISHIKESH



Medical



Tourism



Pligrimage



Adventure Sports



Yoga & Meditation





# DEECON GROUP

Today Deecon Group is a name to reckon with new age architecture marvels and excellence in construction. For over 15 year, the group has been putting sincere efforts to bring together the elements of fine living in a world that one would be proud to belong to. The group has to its credit several pioneering prjects that seek to revolutionize the living and working environment in an international way. To name a few are several housing complex and prestigious school building in New Delhi.





# DEECON VALLEY

Sprawling expanse of 36000sq.yards in the laps of Hamalyas, Deecon Valley is nestled at the bank of holy river Ganga at Rishikesh. It welcomes you to live closest to the God and your own soul. A divine experience overwhelmed with holy shrines, abundance of tranquility, awe-inspiring ambience and a spellbinding aroma of fresh air.

Enveloped with trees capped mountains, it's a different world where you'll find yourself surrendering to a complete peace of mind.



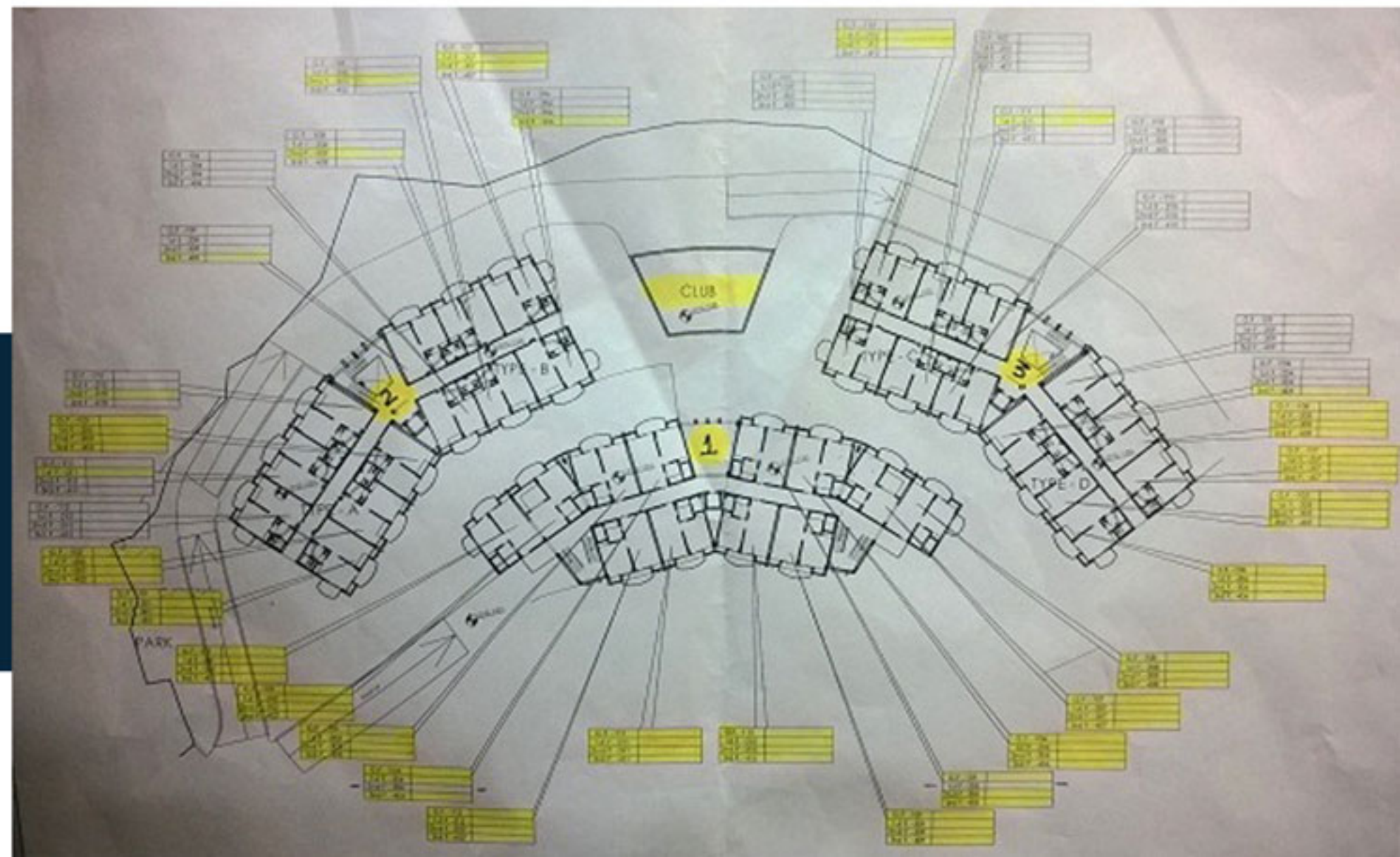


# ACCOMMODATION



A world that spreads from chorus of nature to fragrance of myriad blooms, from sheer scale of 1160 ft from sea level to the depth of spirituality, from inspiring exteriors to heartwarming interiors, and from finest comforts to the best in amenities.

## SITE MAP





# LOCATION MAP & ADVANTAGES

- Immediate Access From The National highway
- Close Proximity to River Ganga
- Panaromic Views Of Majestic Himalayas
- Close To Lakshman Jhoola
- Away From River Catchment Area
- Pet allowed



## LOCATION PLAN

NOT TO SCALE





# SPECIFICATION

ITEM	SPECIFICATIONS	FURNISHINGS
STRUCTURE	Earthquake Resisting Framed Structure for Zone 5 IS code considerations	
EXTERNAL FINISH	Maintenance free texture paints in combination with concrete tile works with Sloping roofs	

## AREAS

LIVING ROOM	Flooring of Vitrified Tiles	Comfy Sofa set with Center Table
	Walls with POP punning and Acyrlc Emulsion Paints	LCD screen Television  Side Consoles and Soft Furnishings with Curtain Rods
BEDROOMS	Vitrified Tiles/ laminated floors	Double Beds with Mattresses
	Walls with POP punning and Acyrlc Emulsion Paints	Dressing table Unit  Side Consoles and Soft Furnishings with Curtain Rods  Storage Cupboards  Bedrooms with attached AC unit



# SPECIFICATION

ITEM	SPECIFICATIONS	FURNISHINGS
DINING AREAS/ LOBBY/ LOUNGE	Flooring in I Vitrified Tiles	Dining table set with chairs
	Walls with POP punning and Acrylic Emulsion Paints	Side Consoles and Soft Furnishings with Curtain Rods
KITCHEN	Flooring in Anti Skid Rectified Tiles	Drinking water RO supply
	Counter in Non Staining Polished Granite Stone	Modular kitchen with pre laminated board
	Walls with Ceramic tiles upto 2 ft above counter Height in general area and 7 Ft ht in wet areas, acrylic emulsion in the remaining	
	Modular kitchen with pre laminated board	Refrigerator
	CP Fittings in Jaguar and Stainless Steel sink with drain board	Electrical exhaust chimney
TOILETS	All plumbing works in rust free polycarbonate pipes with heat insulation	Cooking Hob
	Flooring in Anti Skid Rectified Tiles	All Toilets with Geysers
	Walls with Designer Ceramic tiles upto ceiling Height	T towel rings and racks
	Counter in Non Staining Polished Granite Stone	All Toilets with Geysers
	Provision of hot and Cold water with all plumbing works in rust free polycarbonate pipes with heat insulation	Mirrors on top of wash counter



# SPECIFICATION

ITEM	SPECIFICATIONS	FURNISHINGS
TOILETS	CP Fittings in Jaguar and fixtures in perry/ Cera	Exhaust fan
BALCONY / VERANDAHS	Flooring in Anti Skid Rectified Tiles	
	Walls with permanent texture paints	

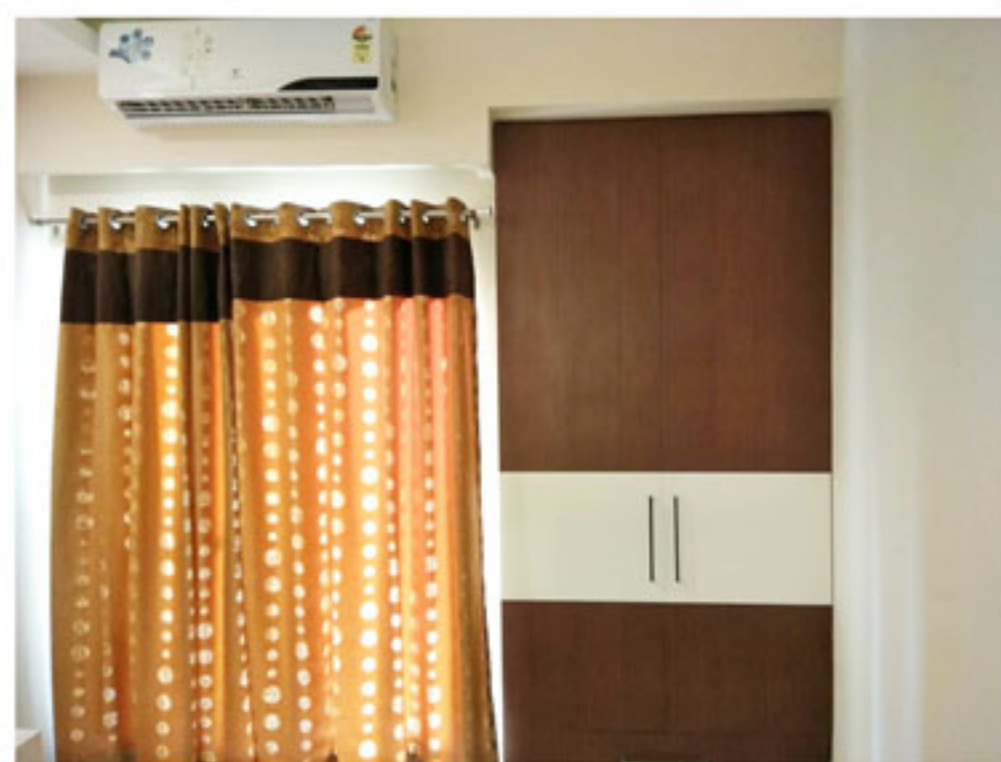
## OPENINGS

ITEM	SPECIFICATIONS
INTERNAL OPENINGS	Internal Door Wooden hardwood frame with Flush Door in Veneer Finish  Main DoorWooden Hardwood frame with Solid paneled Teak wood Door
EXTERNAL OPENINGS	State of the Art International Standard Aluminum composite Doors and windows with wire mesh.
COMMUNICATIONS	Intercom and cable TV supply Feed to all households  Provision for Broadband Internet connectivity in each house
LIFTS	Lift facility for all units
COVERED PARKING	OPTIONAL (on demand)
FIRE FIGHTING	AS PER NBC with latest modernized equipment
SECURITY SYSTEM	24 HOURS Manual security system  Entire complex covered with CCTV surveillance
POWER BACKUP	Upto 500 Watts for each unit along with general emergency lights





# DEECON LIFESTYLE







## STUDIO APARTMENT

1 BEDROOM  
LIVING ROOM  
DINING ROOM  
KITCHEN  
TOILET  
BALCONY

**650**  
SQ. FT.  
1BHK SUPER AREA



## 2 BEDROOM APARTMENT

2 BEDROOM  
LIVING ROOM  
DINING ROOM  
KITCHEN  
2 TOILET  
BALCONIES

**1150**  
SQ. FT.  
2 BHK SUPER AREA



# NEWS

## Reasons why Rishikesh is a must-visit destination for every traveller!

Last Updated: Sunday, July 10, 2016 - 20:01



Image courtesy: Thinkstock Photos

New Delhi: Indian city of **Rishikesh** has got a lot to offer. By serving travellers what they actually want, this destination has emerged as one of the finest places to visit in the country. And, this is the reason why Rishikesh witnesses a rise in the number of foreign as well as domestic tourists every year.

**Centre to develop Haridwar, Rishikesh as twin cities: Mahesh Sharma**  
By PTI | Updated: Aug 18, 2015, 11:08 PM IST  
DEHRADUN: Union Minister of State for Tourism Mahesh Sharma today said the central government would develop Haridwar and Rishikesh as twin cities to boost tourism.  
Sharma today called on Uttarakhand Chief Minister Harish Rawat at his residence here, during which he said the Union government would develop the pilgrim cities Haridwar and Rishikesh as twin cities, an official release stated.  
A large number of foreign tourists can be attracted to Haridwar and Rishikesh if the Centre develops the ghats on the bank of the Ganga river, the Chief Minister said.  
He said that Uttarakhand can be developed as a major tourist destination of south-east India which the Union Minister also "agreed", the release said.  
Sharma, who was on a day-long visit to the state, also assured the state government of the support in developing Kedarnath and Tehri as popular tourist destination, the official released stated.  
He would be a famous tourist spot soon, the Union minister said.



## Ancient route from Rishikesh to Kedarnath rediscovered

Seema Sharma | TNN | Feb 19, 2016, 09:53 PM IST

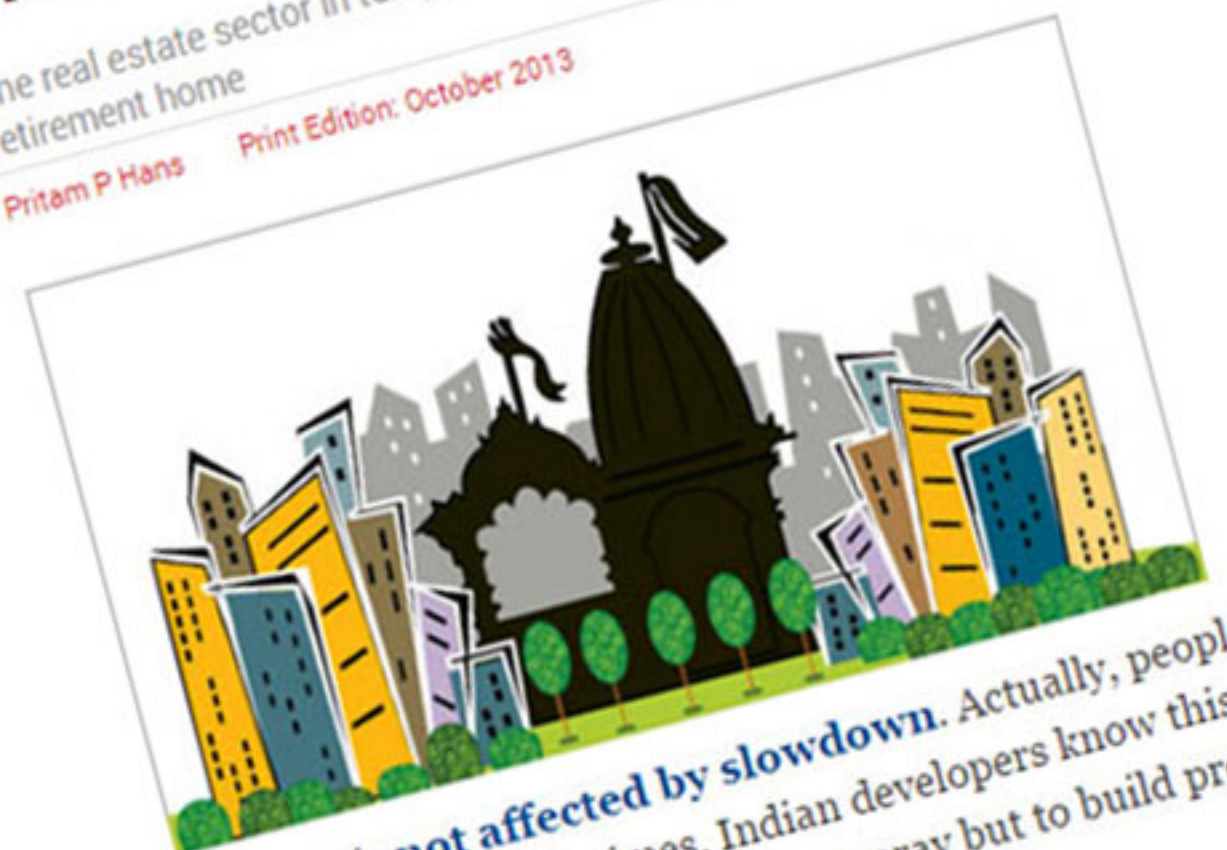
**D**EHRADUN: A city-based heritage enthusiast has rediscovered an old walking trail from Rishikesh to Kedarnath. Earlier used by sadhus, it is now lying unused and forgotten. The trail, which is dotted with shelters for travelers, now equally decrepit, cuts short the journey between the two pilgrimage sites to a week.

Lokesh Ohri, founder of the walkers' group Been There, Doon That (BTDT) and a convenor for the Indian National Trust for Art and Cultural Heritage (INTACH) came upon a text in Hindi by a local scholar named Shaligram Vaishnav, who wrote a travelogue based on his yatra in 1929. Ohri and his group held consultations with several local sadhus and members of the Kali Kamli Trust, that once provided rations to pilgrims along the trail. They also met with the aging 'gumashtas' or porters who accompanied pilgrims on the trail.

"Starting out on January 1, our group managed to locate all the 'chattis' (halting stations) along the route, many of them abandoned and decaying now. We also located features like cave shelters and river crossings, took GIS readings of the sites and digitally mapped the 438 km long route, completing it in routes of 438 km by covering the entire route in ten days," said Ohri. The route ordinarily takes a week's cover.

## In Search Of Peace

The real estate sector in temple towns is buzzing with action. These can be good places to retirement home  
Pritam P Hans Print Edition: October 2013



Religion is **not affected by slowdown**. Actually, people become fearing during tough times. Indian developers know this well. They are headed to pilgrimage towns, not to pray but to build projects to want to live in proximity to their gods.  
Many developers have launched projects in the land of their gods.

## In Rishikesh, soon a pilgrimage for The Beatles fans

Anupam Trivedi, Hindustan Times, Dehradun | Updated: Apr 17, 2015 18:06 IST



The Beatles was a four-member-English-rock-band-consisting-of-John-Lennon-Paul-McCartney-George-Harrison-and-Ringo-Starr-Shutterstock



# CONTACT



DEECON INFRASTRUCTURE PVT LTD

DELHI OFFICE

DEECON HOUSE-360  
SECTOR 19, BLOCK- B, DWARKA  
NEW DELHI-110075  
M : +91 99100 01911 / +91 98101 24721

email id : [info@deecon.co.in](mailto:info@deecon.co.in)  
web : [www.deecon.co.in](http://www.deecon.co.in)